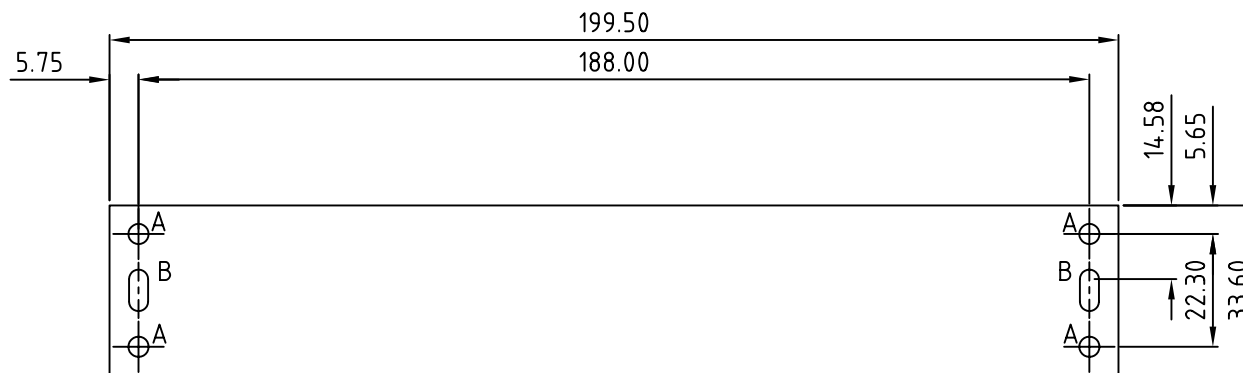


FIRST ANGLE PROJECTION

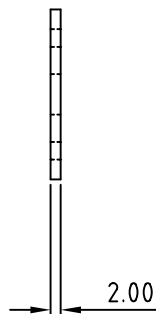
Modifications

Iss

1

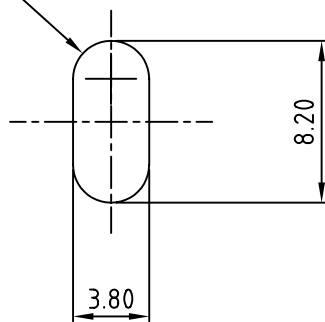


HOLE  
A =  $\phi 4.0$ mm



Material is 2mm aluminium with an etch and clear anodise finish.

Full Rad DETAIL 'B' (4:1)



TOLERANCES  
LINEAR  $\pm 0.1$   
ANGULAR  $\pm 0.25^\circ$

Note: Subject to technical modifications without prior notice.  
Typographical and other errors do not justify any claim for damages.  
All dimensions should be verified using the actual case.

Tolerances unless otherwise stated: General tolerances $\pm 0.20$ Resultant tolerances between hole centers $\pm 0.15$ Tolerances on hole diameters $\pm 0.05$ Angles $\pm 0.5^\circ$ Surface finish $\sqrt{3}$	Required Finish:	Scale: 1:1	ALL DIMENSIONS IN MILLIMETRES			DO NOT SCALE
	Drawn by: Ian Cox	Checked By:	Drawing Number M5700607	Date drawn: August '05	Material Spec.	
METCASE ENCLOSURES Unit 3, Mitchell Close Segensworth East, Fareham, Hampshire, PO15 5SE, UK. www.metcase.com		Part Name Front Panel Kit 230 x 50		Part Number M5700607		Sheet 1 of 1
<small>©OKW ENCLOSURES LTD (DATE AS SHOWN). THIS DRAWING CONTAINS PROPRIETARY INFORMATION OF OKW ENCLOSURES LTD AND IS TENDERED SUBJECT TO THE FOLLOWING CONDITIONS: THE INFORMATION BE RETAINED IN CONFIDENCE, NOT BE REPRODUCED OR COPIED, AND NOT BE USED OR INCORPORATED IN ANY PRODUCT, UNLESS PERMISSION IS OBTAINED IN WRITING FROM OKW ENCLOSURES LTD.</small>						