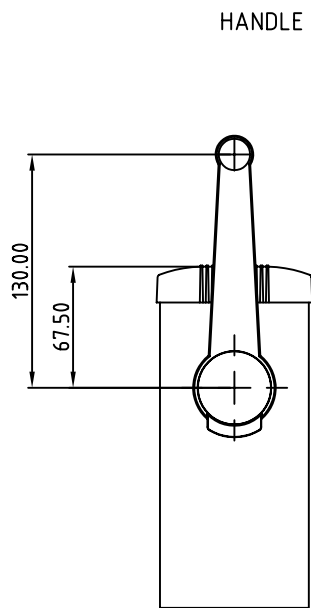


FIRST ANGLE PROJECTION

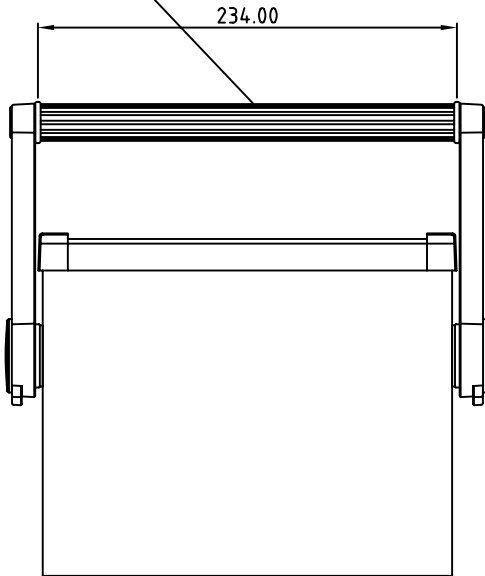
Modifications | Iss

	1
--	---

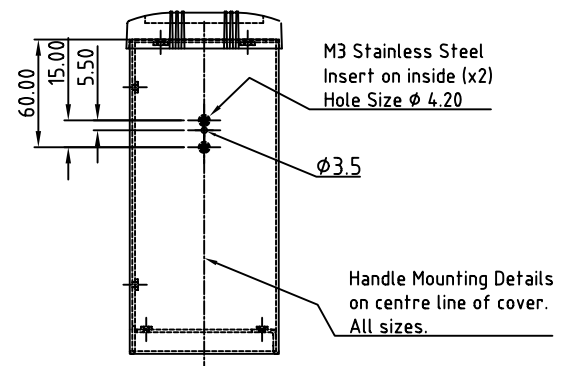
A
B
C
D
E
F
G
H
I
J



HANDLE BAR PARTNo. M5600023



SIDE ARM KIT PARTNo. AS054231
(2 SIDE ARMS PER KIT)



Note: Subject to technical modifications without prior notice.
Typographical and other errors do not justify any claim for damages.
All dimensions should be verified using the actual case.

<p>Tolerances unless otherwise stated:</p> <p>General tolerances ±0.20 Resultant tolerances between hole centers ±0.15 Tolerances on hole diameters ±0.05 Angles ± 0.5° Surface finish 3.2/✓</p>	<p>Required Finish:</p>	<p>Scale: 1:4</p>	<p>ALL DIMENSIONS IN MILLIMETRES</p>			<p>DO NOT SCALE</p>
	<p>Drawn by: Ian Cox</p>	<p>Checked By:</p>	<p>Drawing Number: Size2HandleAssy</p>	<p>Date drawn: August '05</p>	<p>Material Spec.</p>	
<p>METcase METCASE ENCLOSURES Unit 3, Mitchell Close Segensworth East, Fareham, Hampshire, PO15 5SE, UK. www.metcase.com</p>		<p>Part Name: UNIMET 2H</p>		<p>Part Number: M5623125</p>		<p>Sheet 1 of 1</p>
<p>©OKW ENCLOSURES LTD; DATE AS SHOWN. THIS DRAWING CONTAINS PROPRIETARY INFORMATION OF OKW ENCLOSURES LTD AND IS TENDERED SUBJECT TO THE FOLLOWING CONDITIONS: THE INFORMATION BE RETAINED IN CONFIDENCE, NOT BE REPRODUCED OR COPIED, AND NOT BE USED OR INCORPORATED IN ANY PRODUCT, UNLESS PERMISSION IS OBTAINED IN WRITING FROM OKW ENCLOSURES LTD.</p>						<p>A4</p>