

MSTB 2,5/...-G

Open-end header,
plug-in direction **parallel** to the p.c.b.

Pitch 5.0 or 5.08

	I	U
	[A]	[V]
Connection data	12	250



Description	No. of positions	Dim. a [mm]	Type	Order No.	Pcs. Pkt.
Header, 5.0 mm pitch, color: green	2	5	MSTB 2,5/2-G	17 54 43 6	50
	3	10	MSTB 2,5/3-G	17 54 45 2	
	4	15	MSTB 2,5/4-G	17 54 47 8	
	5	20	MSTB 2,5/5-G	17 54 49 4	
	6	25	MSTB 2,5/6-G	17 54 51 7	
	7	30	MSTB 2,5/7-G	17 54 53 3	
	8	35	MSTB 2,5/8-G	17 54 55 9	
	9	40	MSTB 2,5/9-G	17 54 57 5	
	10	45	MSTB 2,5/10-G	17 54 59 1	
	11	50	MSTB 2,5/11-G	17 54 61 4	
	12	55	MSTB 2,5/12-G	17 54 63 0	
	13	60	MSTB 2,5/13-G	17 54 65 6	
	14	65	MSTB 2,5/14-G	17 54 67 2	
	15	70	MSTB 2,5/15-G	17 54 69 8	
	16	75	MSTB 2,5/16-G	17 54 71 1	
	17	80	MSTB 2,5/17-G	17 54 73 7	
	18	85	MSTB 2,5/18-G	17 54 75 3	
	19	90	MSTB 2,5/19-G	17 54 77 9	
	20	95	MSTB 2,5/20-G	17 54 79 5	
	21	100	MSTB 2,5/21-G	17 54 81 8	
	22	105	MSTB 2,5/22-G	17 54 83 4	
	23	110	MSTB 2,5/23-G	17 54 85 0	
	24	115	MSTB 2,5/24-G	17 54 87 6	
	Header, 5.08 mm pitch, color: green	2	5.08	MSTB 2,5/2-G-5,08	
3		10.16	MSTB 2,5/3-G-5,08	17 59 02 0	
4		15.24	MSTB 2,5/4-G-5,08	17 59 03 3	
5		20.32	MSTB 2,5/5-G-5,08	17 59 04 6	
6		25.40	MSTB 2,5/6-G-5,08	17 59 05 9	

7	30.48	MSTB 2,5/7-G-5,08	17 59 06 2
8	35.56	MSTB 2,5/8-G-5,08	17 59 07 5
9	40.64	MSTB 2,5/9-G-5,08	17 59 08 8
10	45.72	MSTB 2,5/10-G-5,08	17 59 09 1
11	50.80	MSTB 2,5/11-G-5,08	17 59 10 1
12	55.88	MSTB 2,5/12-G-5,08	17 59 11 4
13	60.96	MSTB 2,5/13-G-5,08	17 59 12 7
14	66.04	MSTB 2,5/14-G-5,08	17 59 13 0
15	71.12	MSTB 2,5/15-G-5,08	17 59 14 3
16	76.20	MSTB 2,5/16-G-5,08	17 59 15 6
17	81.28	MSTB 2,5/17-G-5,08	17 59 16 9
18	86.36	MSTB 2,5/18-G-5,08	17 59 17 2
19	91.44	MSTB 2,5/19-G-5,08	17 59 18 5
20	96.52	MSTB 2,5/20-G-5,08	17 59 19 8
21	101.60	MSTB 2,5/21-G-5,08	17 59 20 8
22	106.68	MSTB 2,5/22-G-5,08	17 59 21 1
23	111.76	MSTB 2,5/23-G-5,08	17 59 22 4
24	116.84	MSTB 2,5/24-G-5,08	17 59 23 7

Technical data**Dimensions**

see description

Pitch	[mm]	5.0 / 5.08
Pin dimensions	[mm] x [mm]	1x1
Hole diameter	[mm]	1.4

Technical data in accordance with IEC / DIN VDE

Insulation material group	–		IIIa	
Surge voltage category / contamination class	–/–	III / 3	III / 2	II / 2
Rated voltage	[V]	250	320	400
Rated surge voltage	[kV]	4	4	4
Nominal current	[A]		12	
Maximum load current per position	[A]		12	

Insulation material

PBT

Inflammability class acc. to UL 94

V0

Temperature indices RTI/Ti

140/120

Approval data (UL and CSA)

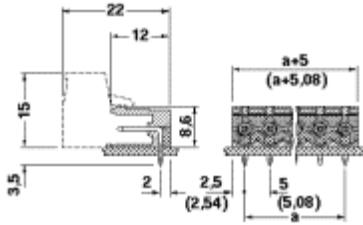
Nominal voltage / current / conductor sizes	UL: [V] / [A] / AWG	300 / 10 / –
	CSA: [V] / [A] / AWG	300 / 10 / –

Articles printed in bold can be delivered at short notice.
Products with black or gray housing available on request.

Note:

Only actuate COMBICON plug connectors when under no load condition. If for operating reasons small loads must be switched, experimental values are available on request.

Dimensional drawing



Drilling diagram

